



RELIABLE,
EFFICIENT,
SUSTAINABLE

DATA CENTER SOLUTIONS

CONTENTS

| | |
|-------|---------------------------------------|
| 2-3 | OUR COMMITMENT TO SUSTAINABILITY |
| 4-5 | IMPROVING LIVES |
| 6-7 | LEGRAND – A GLOBAL PLAYER |
| 8-9 | OUR DATA CENTER OFFER |
| 10-11 | GREY SPACE |
| 12-13 | CAST RESIN TRANSFORMERS |
| 14-15 | HIGH POWER BUSBARS |
| 16-17 | SWITCHGEAR |
| 18-21 | UPS AND STS SOLUTIONS |
| 22-23 | CABLE PATHWAYS |
| 24-25 | EZ-PATH FIRE RESISTANT DEVICE |
| 26-27 | WHITE SPACE |
| 28-29 | TRACK BUSWAY |
| 30-31 | CONTAINMENT AND COOLING |
| 32-33 | ROW-BASED ACTIVE COOLING |
| 34-35 | REAR DOOR COOLING |
| 36-37 | SERVER AND NETWORK RACKS AND CABINETS |
| 38-39 | INTELLIGENT PDU'S AND SENSORS |
| 40-41 | KVM & SERIAL CONSOLE |
| 42-43 | STRUCTURED CABLING |
| 44-45 | CONNECTIVITY FIBER SOLUTION |
| 46-47 | DCIM SOFTWARE INTEGRATION |
| 48-49 | CUSTOMER SUCCESS STORIES |



DATA CENTER SOLUTIONS POWERED BY SPECIALIST BRANDS

Running a high-performance data center is complex. It means delivering **power, cooling, security**, and reliability – all while planning for the unknown. The infrastructure solutions you source must be **agile and adaptable** to meet these evolving concerns. At Legrand, **we go further** to help you navigate the complexities of running a modern data center, anticipating the needs of today to ensure we can cater for the demands of tomorrow. For over **30 years**, our brands have helped solve complex challenges and guide some of the largest data centers in the world through uncertainty.

We offer **tailored grey and white space solutions** at scale to meet your individual needs through our specialist brands like **Borri, Cablofil, Compose, Geiger, Minkels, modulan, Power Control, Raritan, Server Technology, Starline, USystems, Voltadis and Zucchini**. These solutions optimize uptime, enhance reliability, and **deliver exceptional performance**.

Our agility and attention to detail are key to solving your unique challenges and managing uncertainty. From innovating cooling systems to improving power usage and customizing layouts, we combine **precision engineering** with **forward-thinking design**.

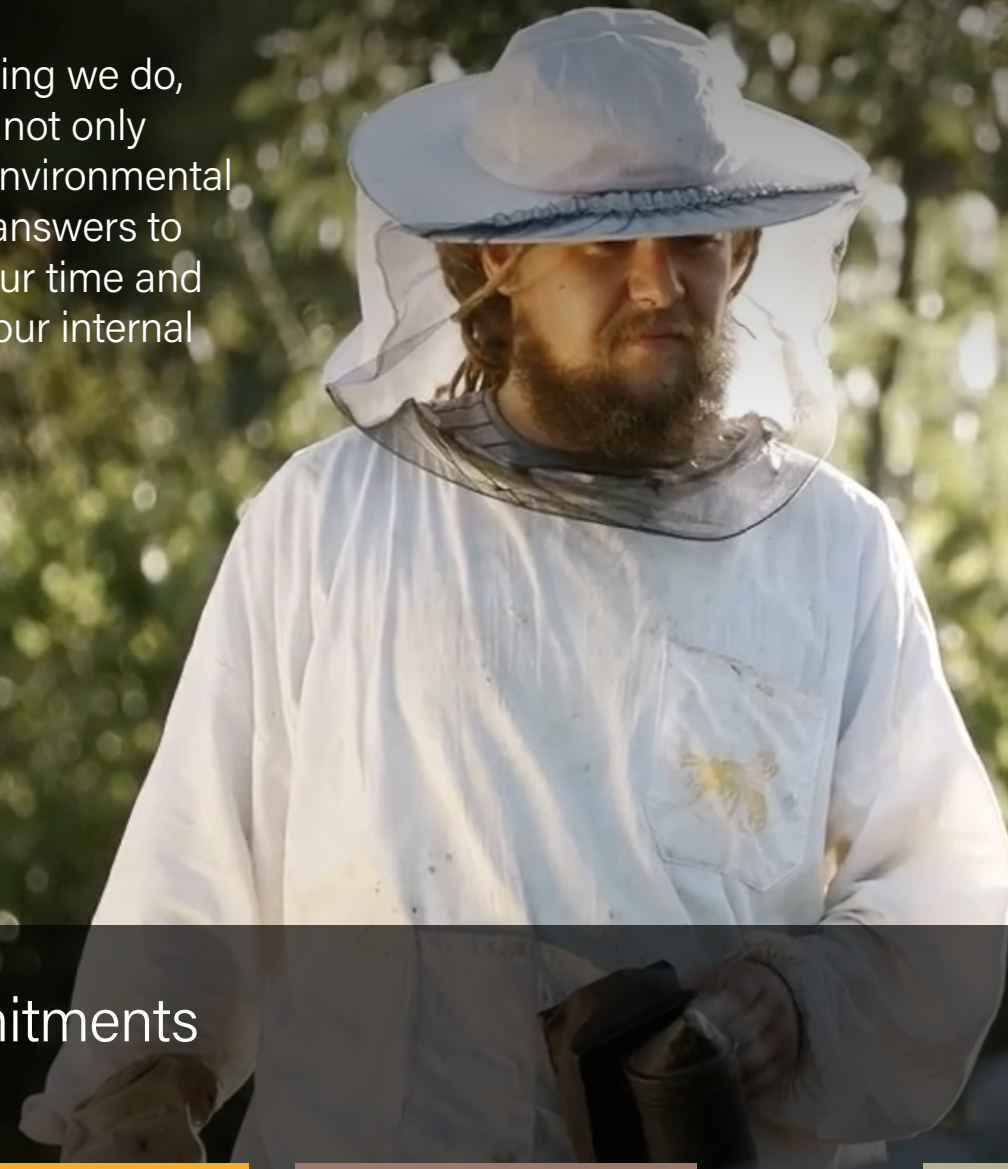
Choosing Legrand means choosing a partner dedicated to **reliability, trust, and progress** – delivering not just superior data centers but **confidence for the future**.

"As IT infrastructure requirements and buying behavior evolve, so too does Legrand's suite of solutions. Our commitment to sustainability ensures that our offerings support next-generation technologies, offering modularity and flexibility for future scalability while prioritizing energy efficiency and streamlined installation. Rooted in superior design, Legrand is a trusted partner, delivering tailored solutions that anticipate and meet your precise needs, ensuring lasting reliability."

Marc Marazzi, Vice President Legrand Data Center Solutions Europe

OUR COMMITMENT TO SUSTAINABILITY

Sustainability is central to everything we do, ensuring that every improvement not only benefits operations but reduces environmental impact. We go further to provide answers to the major societal challenges of our time and maintain this consistency across our internal teams, brands, and partners.



Our five key CSR commitments

1 Promoting diversity, equity and inclusion

We are building inclusive working environments, encouraging gender diversity, and we try to achieve a diverse range of profiles

2 Mitigating climate change

Reducing the Group's carbon footprint and that of our products is a key priority in the fight against climate change

3 Developing a more circular economy

We are developing a more circular approach during the design, use and end-of-life phases of our products

4 Serving our customers

It is essential to make our customers our primary concern if we are to meet their expectations

5 Being a responsible business

We promote a working culture that respects and values every employee and we make sure our suppliers adhere to the same standards as us

2030 target

- Have a third of key managerial positions held by women
- Reducing our GHG emissions by 42% (Scopes 1&2) & Reducing our upstream and downstream GHG indirect emissions by 25% (Scope 3)
- Phasing out single-use plastics in packaging: eliminating 100% of the plastic in primary and secondary packaging for Legrand products
- Enable our customers to avoid the emission of 70 Mt of CO₂ emissions, with Legrand's energy efficiency products and services (Scope 4) between 2020 and 2030
- Reaching 80% of our sales with eco-responsible solutions (through their use as part of our energy efficiency solutions, or covered by a Product Sustainability Profile – PSP)

2050 target

- To be net zero by 2050. This means a 90% reduction in greenhouse gas emissions (scope 1, 2 and 3) across the Group's whole value chain compared to 2022

READ MORE ABOUT OUR CSR STRATEGY ONLINE:



WE IMPROVE LIVES

- Over **150 years of innovation**, delivering **security, reliability**, sustainability and energy efficiency
- Our solutions combine **technical expertise** with a deep commitment to **sustainability**, tackling technological, societal and environmental challenges
- We understand your needs and ambitions, delivering solutions that align with your business goals and **stand the test of time**
- Sustainability drives us, ensuring every improvement **enhances operations** while minimizing **environmental impact**
- Protecting the environment and **customer satisfaction** come hand in hand, as we design solutions that deliver efficiency, reliability and long-term sustainability



READ MORE ABOUT OUR PURPOSE ONLINE:

WWW.LEGRANDGROUP.COM/EN/GROUP/OUR-PURPOSE



AN ACTIVE INTERNATIONAL PRESENCE

Established in over **90 countries**

CONTINUOUS INNOVATION

5% of sales dedicated to R&D every year

CSR ACHIEVEMENT RATE IN 2024

118%

Over **38,000** employees

TOTAL GROWTH IN SALES 2024

Turnover **8.6b€**

A proven market leader in data center solutions

Distribution in close to **170 countries**

REDUCTION IN CO² EMISSIONS

-53% over two years (constant)

A NETWORK OF EXPERT TEAMS AT YOUR SIDE

When it comes to **improving energy efficiency, reliability,** and **overall performance** of the data center, no one is more passionate than us. **No one goes further than us.** Our attention to detail and the way we **customize** and **personalize** the **client experience** has led to lasting and **deep relationships** with our clients globally.

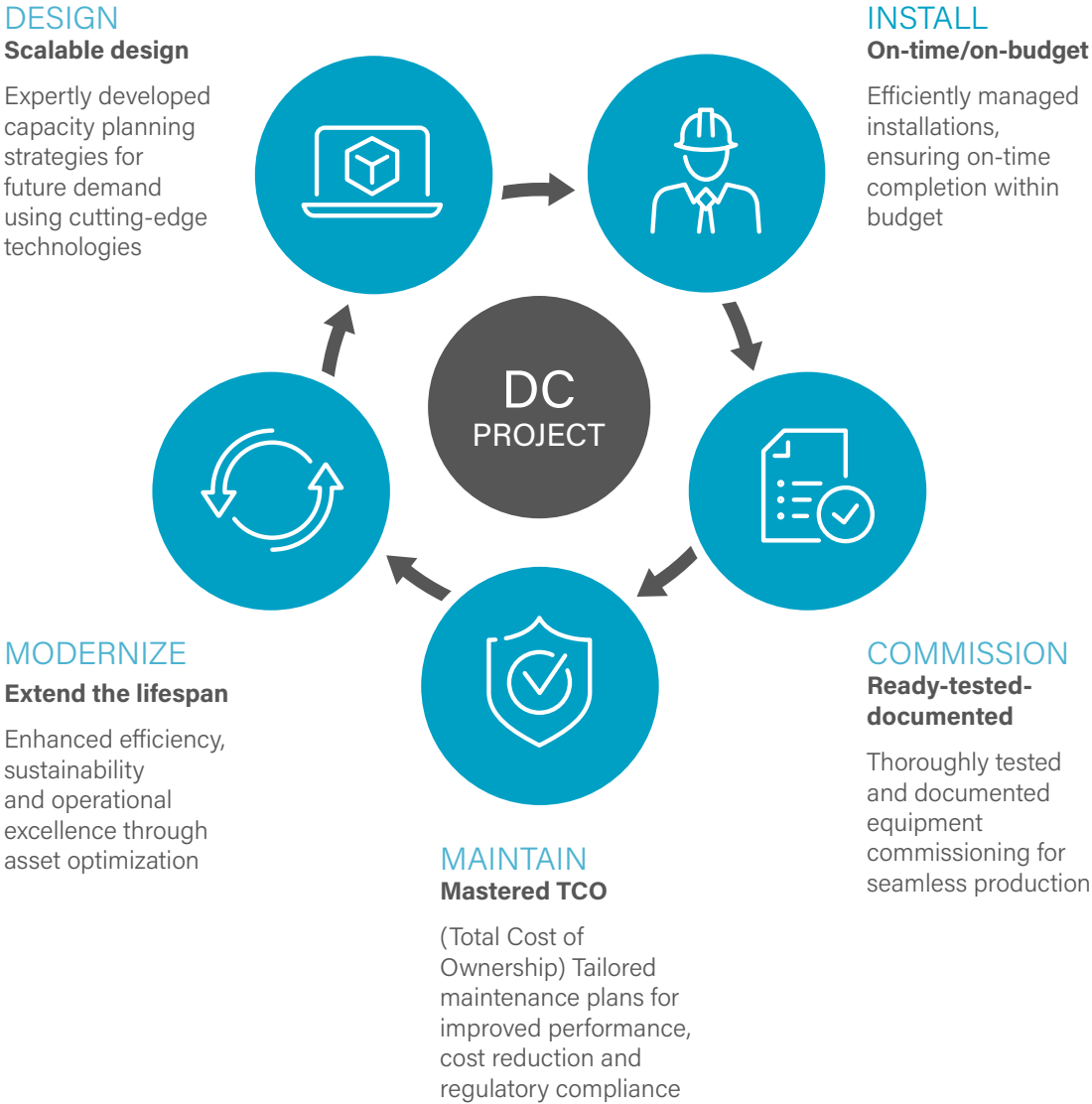


Delivering best-in-class solutions, technical know-how and expert advice



Ensuring peak performance at every stage of your project's life cycle

We go further to **support you at every step** along the way – from pre-sales consultation and project execution to maintenance and after-sales support. With **dedicated local technical support**, regional sales teams across Europe, and an international design office, we bring **global reach with local expertise**.



YOUR TRUSTED PARTNER IN DATA CENTER SOLUTIONS

Infrastructure powered by specialist brands

With ever-increasing demands for **AI, Big Data, Cloud computing**, and **IoT**, infrastructure has become the backbone of business growth. At Legrand, **we go further** to **understand your unique needs**. With **specialist brands, expert teams**, and a deep understanding of infrastructure challenges, our commitment to providing **tailored grey and white space solutions** at scale makes us the **global partner of choice** for high-performing data centers.

More than just meeting demands, **we go further** by helping you **optimize performance, enhance reliability**, and **improve efficiency** in every space.

GREY SPACE

LEGRAND

Complete range of cable pathways, high power busbars and high performance, energy efficient solutions

BORRI

Uninterruptible Power Supplies for industrial applications and data centers

BTICINO

Complete range of low-voltage switchgear solutions designed for performance, safety, and scalability

DAVENHAM

Designs and manufacture of custom low voltage innovative switchgear, offering reliable electrical control and power distribution systems

POWER CONTROL

A leading supplier of uninterruptible power supply solutions for edge computing, co-location and facility power infrastructure

VOLTADIS

Specialized in Turn-Key high-power busbar systems for data centers, ensuring peace of mind from design to commissioning

ZUCCHINI

One of the most comprehensive ranges of cast resin transformers on the market

LEGRAND

Complete global solutions for digital and electrical infrastructure

CABLOFIL

Complete range of market-leading cable pathways

GEIGER

Data center fiber optic infrastructures, data center design and DCIM (monitoring and management) service and implementation

MINKELS

Turn-key hot/cold aisle containment and enclosures for data center infrastructures

MODULAN

Fully customizable containment solutions with maximum flexibility to cover customer needs

RARITAN

Intelligent PDUs, transfer switches, environmental sensors, serial consoles and KVM-over-IP Remote Access switches

SERVER TECHNOLOGY

Customer-driven power, access and control solutions for monitoring and managing critical IT assets

STARLINE

Starline has grown to become a global leader in track busway power distribution equipment

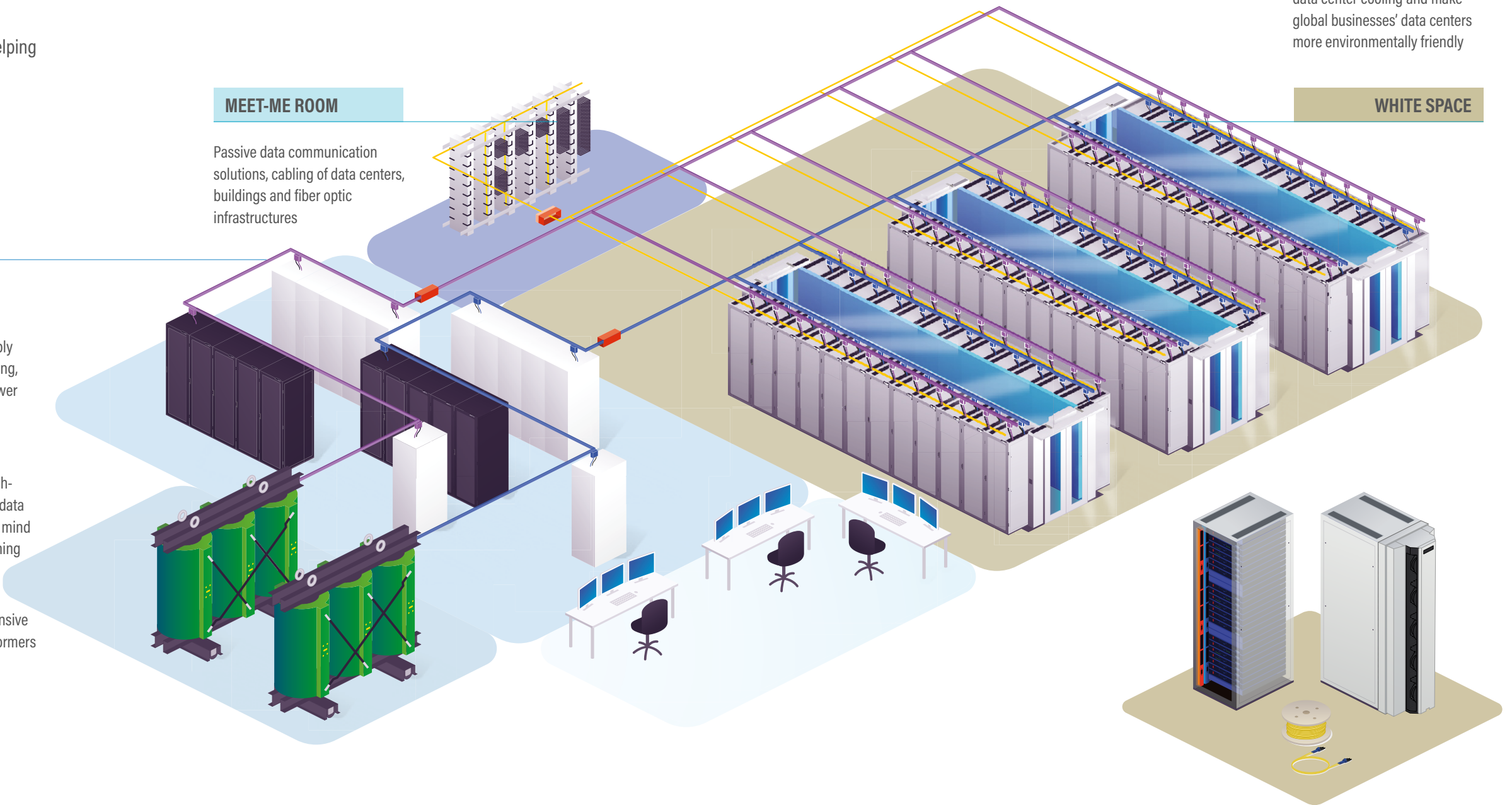
USYSTEMS

Cooling products that enhance data center cooling and make global businesses' data centers more environmentally friendly

MEET-ME ROOM

Passive data communication solutions, cabling of data centers, buildings and fiber optic infrastructures

WHITE SPACE

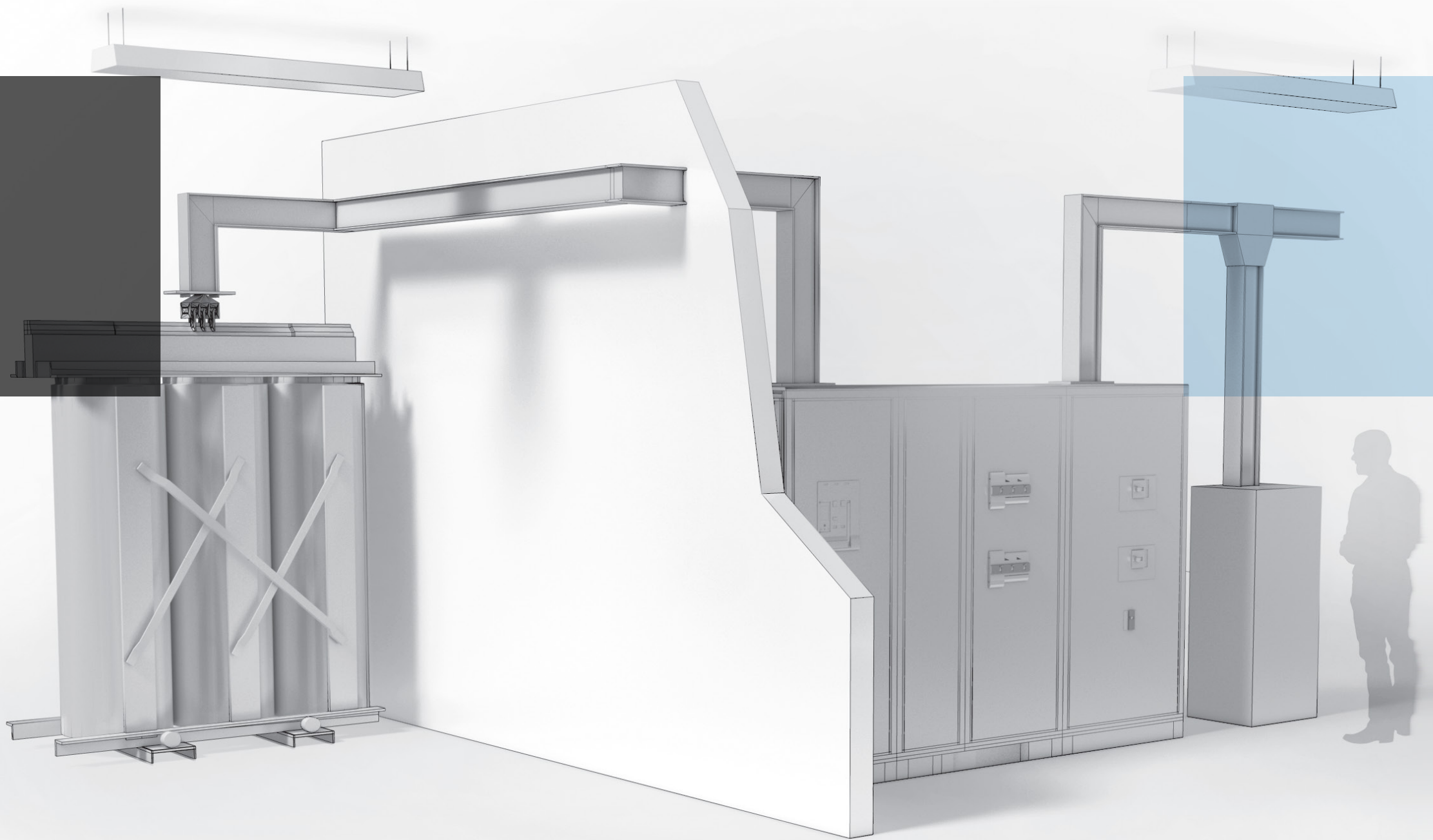


THE POWER BEHIND PERFORMANCE

GREY SPACE SOLUTIONS

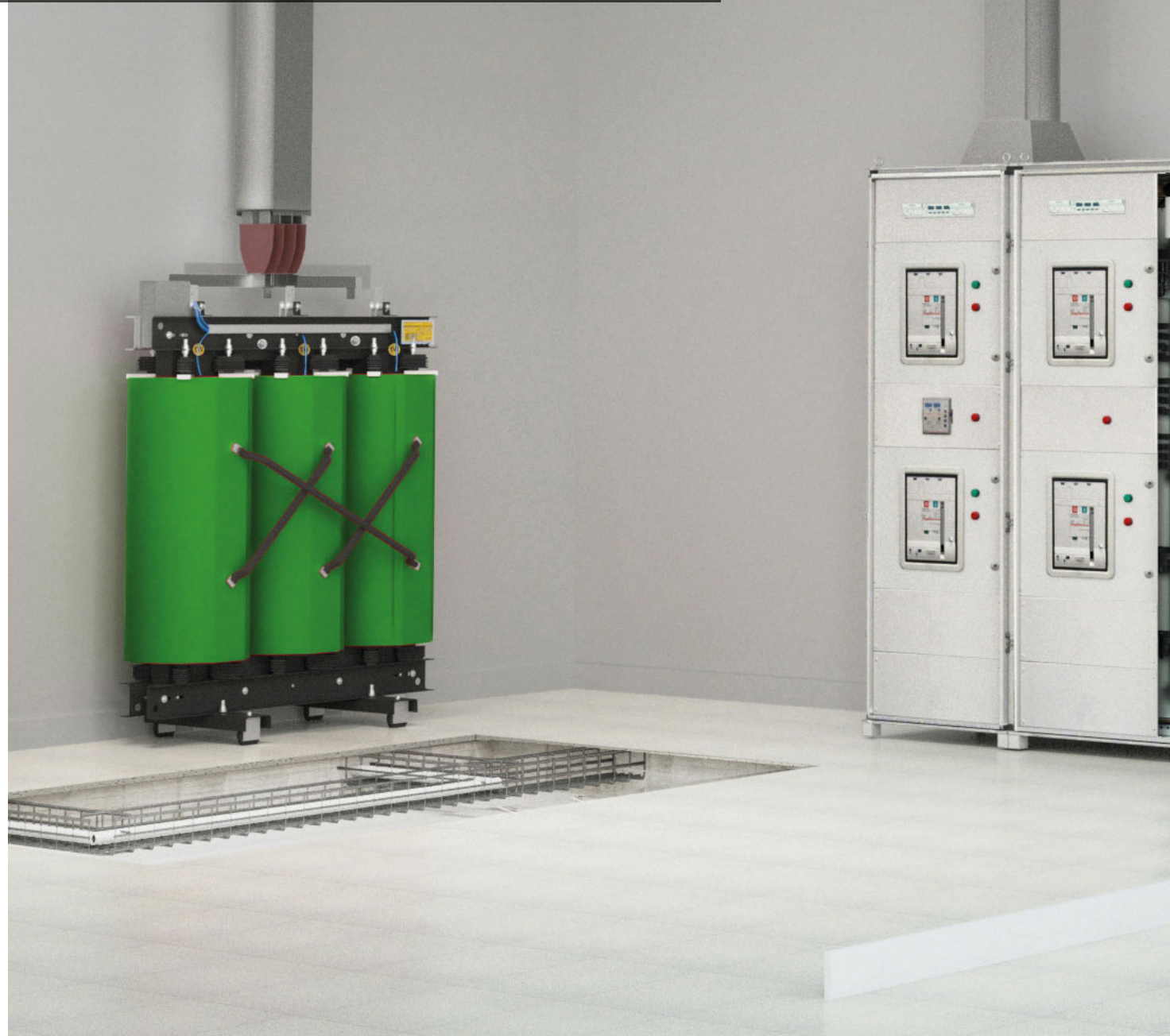
GREY SPACE

- 12-13 CAST RESIN TRANSFORMERS
- 14-15 HIGH POWER BUSBARS
- 16-17 SWITCHGEAR
- 18-21 UPS AND STS SOLUTIONS
- 22-23 CABLE PATHWAYS
- 24-25 EZ-PATH FIRE RESISTANT DEVICE



CAST RESIN TRANSFORMERS

Efficient transformer solutions that reduce consumption and CO₂ emissions, empowering your sustainable future



ZUCCHINI

Legrand's Green T.HE transformers guarantee significant energy savings and reduced CO₂ emissions. Fully compliant with the European Commission's Ecodesign Directive, regulation 548/2014 and subsequent updates (EU regulation 2019/1783), our solutions deliver top-tier performance and reduced losses.

FEATURES

- Power ratings from 50kVA up to 20MVA
- Aluminium and copper winding options
- Class E3 C2 F1 and E4 (on-request)
- Ucc of 6%
- Meets the requirements of the EcoDesign Directive
- Compliant to standard IEC 60076-11
- **Special products are available on demand**

KEY BENEFITS

- Reduced partial discharges < 5pC: guaranteed reliability and optimised service life
- Reduced no-load and load losses (A0 -10% Ak): reduced energy consumption, compact dimensions, minimised noise level, lighter ferromagnetic core
- Dry-type transformer (technology): optimised environmental impact and maintenance
- Self-extinguishing: dry-type transformers that do not ignite



Visit our website

[legrand.com/datacenter](https://www.legrand.com/datacenter)

HIGH POWER BUSBARS

Delivering compact, high-performance busbars with enhanced safety and flexibility for critical applications



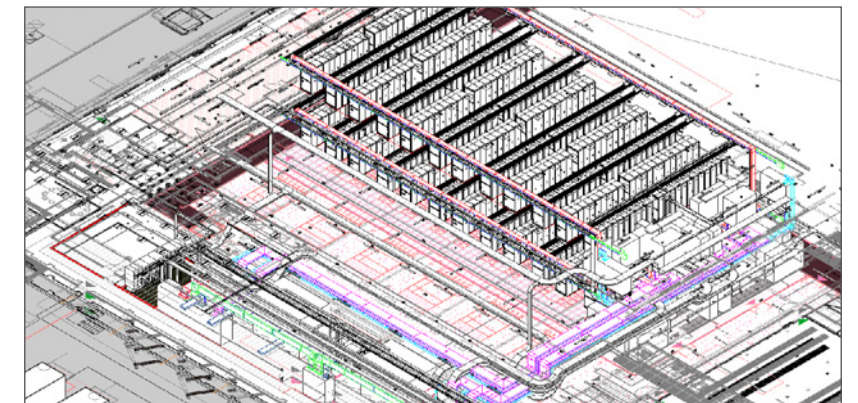
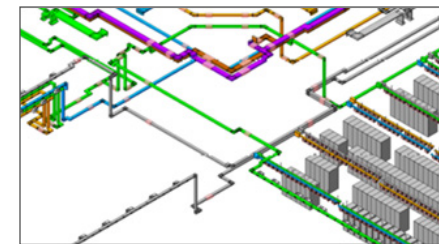
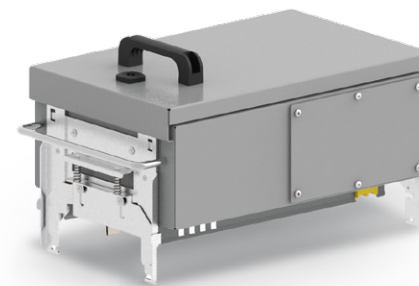
Legrand's smart and ultra-compact XCP busbars are designed to meet the demands of power distribution in modern data centers. Ranging from 630 to 6300 amps, they provide superior performance, flexibility, and scalability, ensuring reliable energy delivery. With up to an IP55 degree of protection (IP65 available), our busbars meet the demands of critical applications while enhancing energy efficiency and safety.

FEATURES

- Fully rated, to an ambient temperature up to 55 degrees Celsius
- System with nominal amperage 630-6300 A, for continuous operation up to 1000 Vac
- Extra compact design with 3, 4 or 5 aluminium or copper conductors
- Variety of Tap off boxes in Interlocked metal or fiber glass up with 1250A
- Insulation classes B and F
- IP55 – IP65 and IP68 Degree of Protection models available
- Fully tested and compliance to standard EN61439-6

KEY BENEFITS

- Better efficiency in power distribution reducing voltage drops
- Proprietary PSSL software ensures fast and accurate layouts, bills of material and Hot Revit files
- AutoCAD and BIM models available
- Ease of installation and reduced installation time, with pre-installed MONOBLOC joint kits
- Safety assured: high rated short-circuit current, superior technology and fire resistance



SWITCHGEAR

Maximize protection and power efficiency with intelligent circuit solutions for your most critical power environments



Legrand's provides ACBs and MCCBs up to 6300A for complete circuit protection, offering exceptional reliability and energy efficiency in critical power environments. They ensure maximum safety, performance, and cost-effective operation in critical power environments. DMX3 and DPX3 protection devices have a range of trip units and auxiliaries for intelligent switching.

FEATURES

- DMX³ ACBs 630A to 6300A
- Four breaking capacities: 42 kA, 50 kA, 65 kA 100 kA
 - All DMX³ breakers are factory equipped with embedded energy measurement protection units
 - Innovative and user-friendly touch screen tripping units
 - Full range of fast clip control accessories

- DPX³ MCCBs from 16A to 1600A
- Four breaking capacities: 36kA, 50 kA, 70kA 100kA
 - Thermal magnetic including embedded energy measurement

- All Protection devices:
- 3 or 4 pole options
 - Optional integrated metering
 - Fixed, plug in or withdrawable options

KEY BENEFITS

- Continuity of Services and Increased safety across the range of Legrand protection devices:
- Circuit protection Selectivity between DPX³/DMX³ electronic circuit breakers
 - Full compliance with EN/IEC standard 60947-2 and 60947-3
 - European Directives REACH, ROHS, RAEE and PEP (Environmental Product Profile) available



Visit our website

[legrand.com/datacenter](https://www.legrand.com/datacenter)

UPS SOLUTIONS

Seamlessly protect and power your systems with energy-efficient, high-uptime UPS solutions



LEGRAND | POWER CONTROL

Legrand's Uninterruptible Power Supply (UPS) solutions – engineered for maximum uptime, energy efficiency, and scalability – now include the high-power Keor FLEX modular UPS, delivering performance from single-phase to multi-megawatt infrastructures, with full hot-swap capability, advanced monitoring, and smart-grid integration. Built in the EU using locally sourced sub-assemblies to reduce CO₂ emissions and supply chain risks, our sustainable UPS systems seamlessly integrate with Legrand's full power portfolio to support next-generation data centers with improved PUE and reduced TCO.

FEATURES

- Single and Three-Phase
- Conventional
- High-Power Modular
- High-Power Scalable
- From 1kW to 4.8MW
- XaaS: Everything as a service
- Simplified serviceability
- Unmatched efficiency even in low load range

KEY BENEFITS

Optimized TCO

- Industry-leading efficiency up to 98,4% in ONLINE mode (99% in ECO Mode)
- Low MTTR for maintenance

- Advanced monitoring and predictive analytics capabilities
- Battery life optimization technology

Sustainability

- Smart-Grid readiness
- Reduced cooling costs
- Eco-design approach

High-availability

- Zero-downtime servicing
- True hot-swap
- Fast & Hot service

Reliability

- Internal busbar
- Multimode redundancy
- Integrated protection and switching

Scalability

- Hot-scalable design tailored to your growth

Adaptability

- Flexible design to fit existing and evolving infrastructures

Compactness

- Optimized footprint with high power density per module



Keor MOD



Keor HPE

STS SOLUTIONS

Critical load protection with seamless, safe power switching for maximum redundancy and resilience

BORRI

Borri Static Transfer Switches (STS) provide fast, seamless load transfer in dual power systems, switching between available power grids, protecting loads, and ensuring uninterrupted service and enhanced safety for critical applications that demand constant reliability.

FEATURES

- From 100 A to 3000 A
- Automatic instant (<4 ms) transfers
- Secure power switching without cross connection
- SCR fault detection and backfeed protection
- Dual manual bypass
- Full front access for easy maintenance
- Bottom and top cable entry
- Fully compliance with international standards

KEY BENEFITS

- Short circuit protection
- No break seamless transfers
- High overload capability
- High fault current management
- High availability
- Minimum maintenance costs



Borri STS



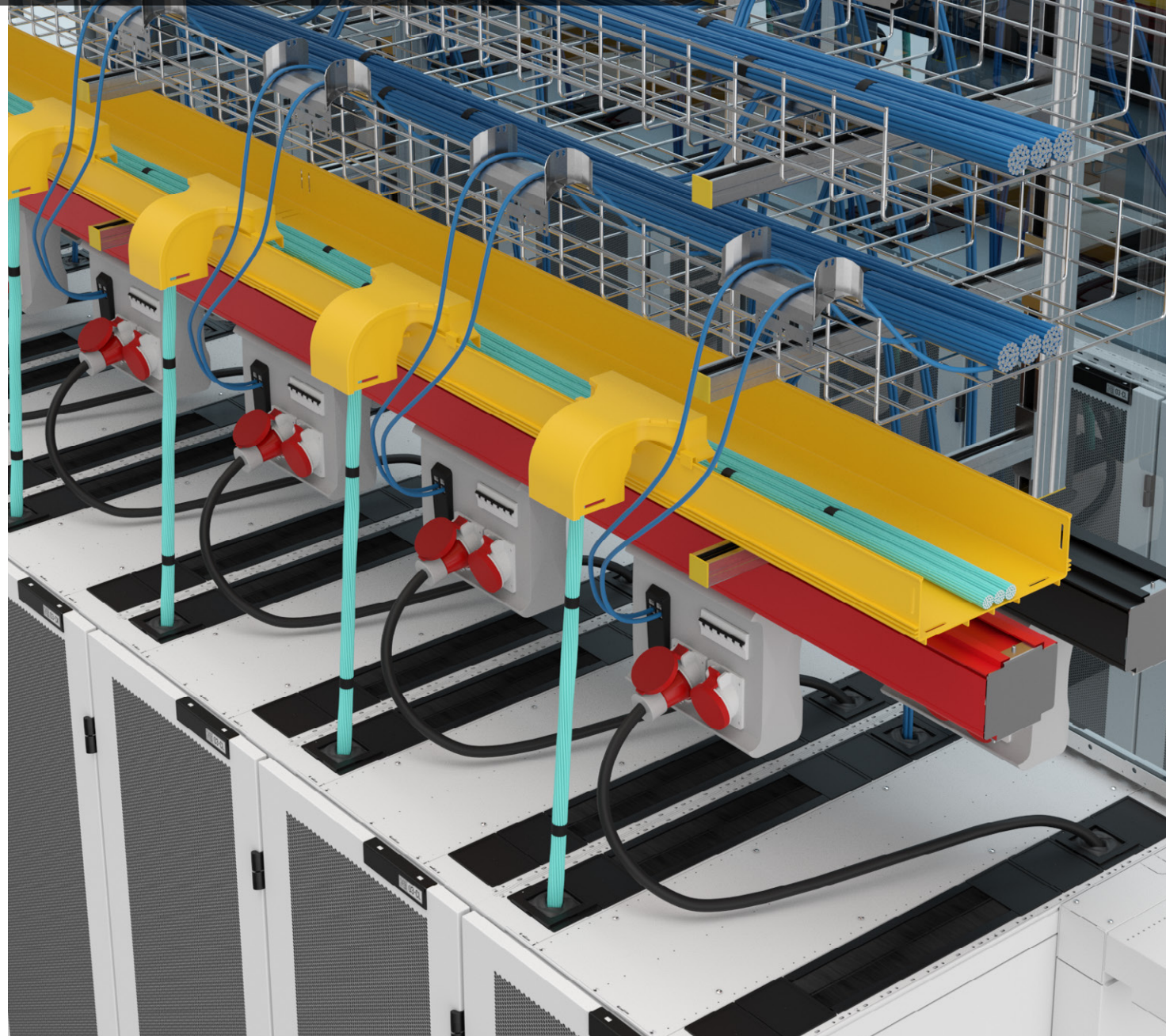
Visit our website

[legrand.com/datacenter](https://www.legrand.com/datacenter)

CABLOFIL | LEGRAND

CABLE PATHWAYS

Optimize installation time and reduce costs with innovative, easy-to-handle cable pathways solutions



KEY RANGES

Legrand offers one of the most comprehensive and reliable cable pathways portfolios for data centers. Designed to meet the demanding requirements of modern infrastructure—from hyperscale to edge—our cable pathway solutions are engineered to ensure performance, speed of installation, safety, and long-term scalability. Whether you need to manage copper or fiber, in white, grey or roof spaces, Legrand delivers tailor-made systems combining innovation, compliance, and global availability.

Cablofil®

The global standard in wire mesh trays: 90% open structure for optimal airflow, fast tool-free installation (Fasclic+), and eco-designed HR finish for reduced CO₂ footprint.

Fiber Raceway

Fully enclosed, modular ducting system that protects fiber with smooth routing, flexible design, and tool-free assembly for safe, efficient management. The P31 metal tray adds integrated Male/Female couplers and edge-protected insert fittings for fast assembly and certified fire resistance. GLO-4 offers a light and medium-duty ladder (rack) system with short 100mm rung spacing, quick couplers, slide-in fittings, and bottom and side drops.

Swifts

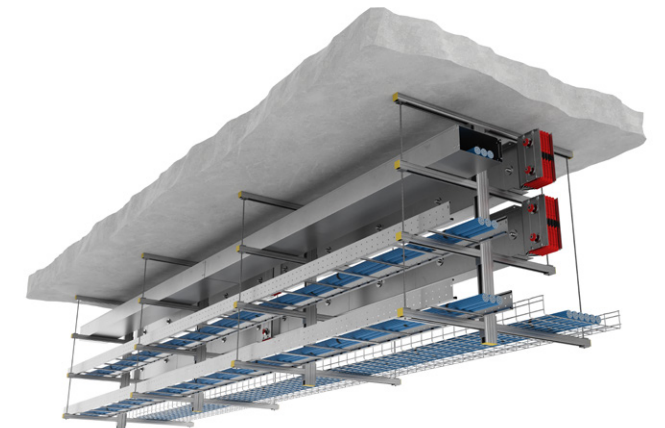
Heavy-duty cable ladder systems designed for high-capacity runs. Swifts ensure quick assembly, long-term reliability, and the robustness required for high-performance installations.

Salamandre

IP-rated security trunking with tamper-proof features. Pre-installed couplers support safe, fast, and efficient installation in sensitive environments.

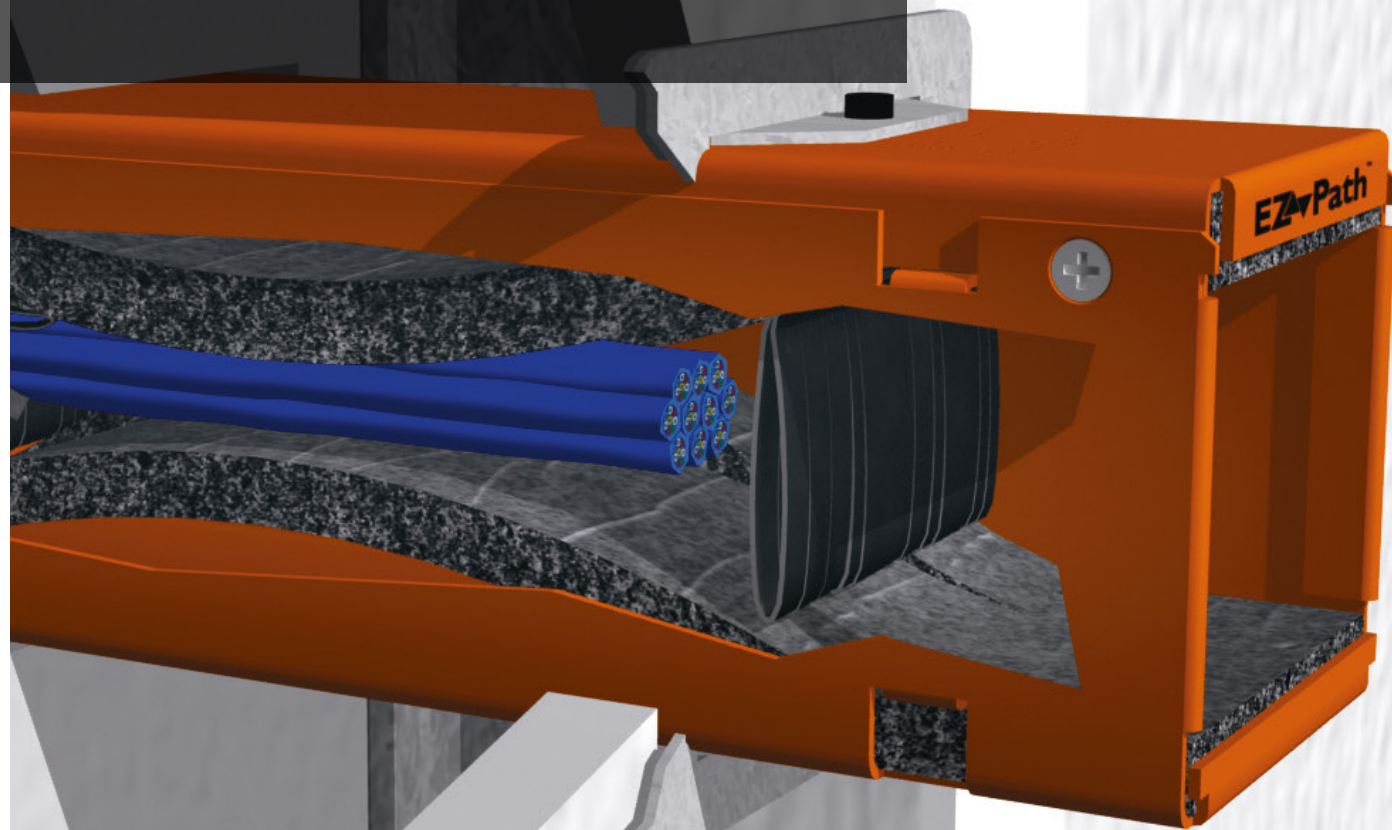
KEY BENEFITS

- Built for Data Centers: Every system is optimized to meet the unique constraints of data center environments, from airflow to access
- Complete compatibility: A full ecosystem of routing, support, firestop, and cable segregation components
- Global standards compliance: All products comply with IEC 61537 and major fire safety standards
- Fast Installation: Innovations like auto-couplers, slide-in systems, and pre-fitted accessories dramatically reduce installation time
- Sustainable by Design: Recycled materials, low-CO₂ finishes, and full PEP documentation support your CSR commitments
- Visual Cable pathways: Color-coded options and design consistency ensure easier maintenance and reduced human error



EZ-PATH FIRE RESISTANT DEVICE

Reliable firestop solutions that ensure compliance and easy installation in any structure



LEGRAND

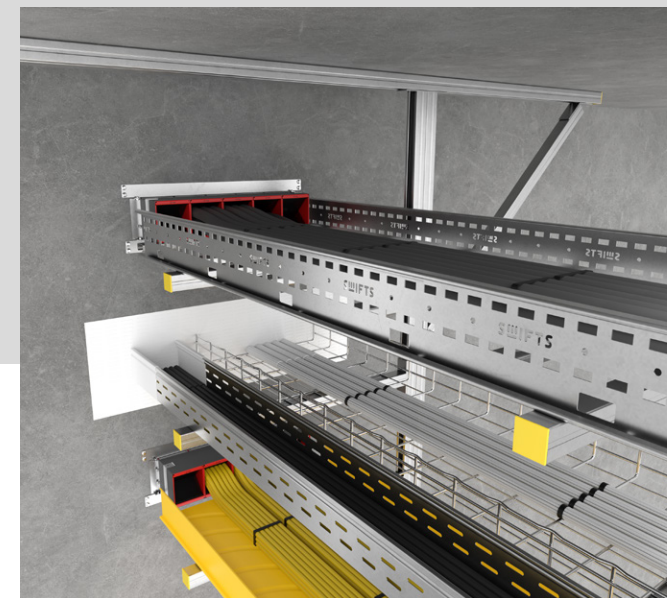
FEATURES

EZ-Path provides a permanent, automatic firestop system suitable for any structure and easily fitted into existing infrastructure. With no requirement for a specialist fire contractor for system installation or maintenance, it ensures safety, compliance, and peace of mind in managing critical cable systems.

- Firestop module consisting of a metal housing containing intumescent pads and, if necessary, combine with fixing plates
- Floor or wall installation
- EI 120 according to EN13501-2

KEY BENEFITS

- Ensures compartmentalization
- Intumescent product expands in case of fire.
- Effective acoustic and smoke barrier
- The intumescent pads ensure support for the cables and maintain air tightness
- No sharp edges
- Automatically adjusts to cable loading
- Favourable cable pathways scalability



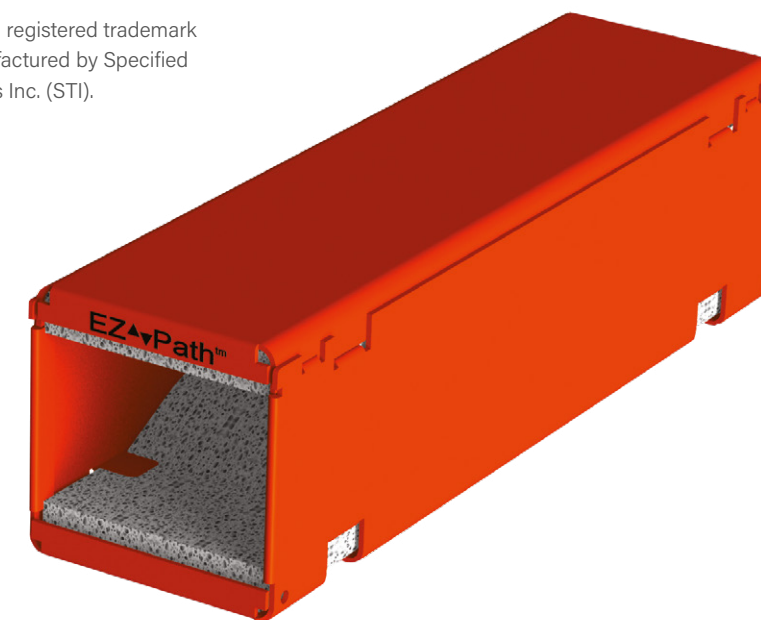
CUSTOMIZED
CONFIGURATION
AVAILABLE



Visit our website

EZ-Path® is a registered trademark and is manufactured by Specified Technologies Inc. (STI).

[legrand.com/datacenter](https://www.legrand.com/datacenter)



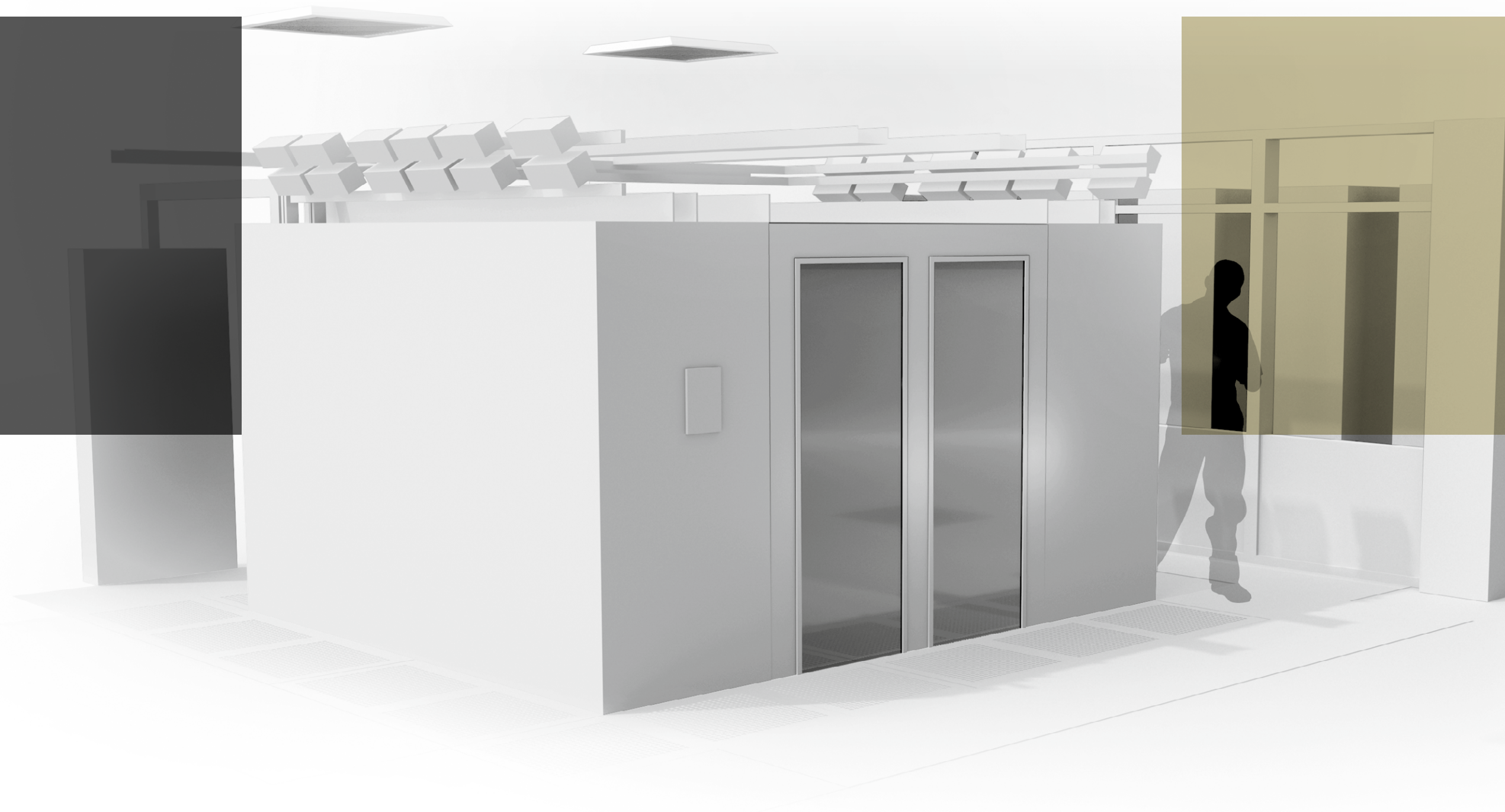
EI120
ACCORDING TO
EN13501-2

SCALABLE. SECURE. RELIABLE.

WHITE SPACE SOLUTIONS

WHITE SPACE

- 28-29 TRACK BUSWAY
- 30-31 CONTAINMENT AND COOLING
- 32-33 ROW-BASED ACTIVE COOLING
- 34-35 REAR DOOR COOLING
- 36-37 SERVER AND NETWORK RACKS AND CABINETS
- 38-39 INTELLIGENT PDU'S AND SENSORS
- 40-41 KVM AND SERIAL CONSOLE
- 42-43 STRUCTURED CABLING
- 44-45 CONNECTIVITY FIBER SOLUTION
- 46-47 DCIM SOFTWARE INTEGRATION



TRACK BUSWAY

Customized, reliable power distribution that adapts to your data center's unique needs



STARLINE

Starline Track Busway offers a robust, flexible power distribution system that ensures safe, reliable, and scalable solutions. With over 90 years of experience, it's designed for longevity, efficiency, and sustainability. Our unique U shaped copper busway system creates constant tension across all joints and tap off points, offering the DC operator a safe and reliable UL 857 and IEC 61439-6 compliant, ETL, CCC, NOM, and VDE certified, CE marked distribution system for global use. Moreover, Starline, with production facilities across three global zones, ensures seamless deployment, regional adaptability, and fast availability worldwide.

FEATURES

- 100ka ICC rated busway system
- 250A – 1250A 4 pole and 5 pole systems
- Independently certified for live tap off insertion
- Preventative cable termination maintenance with optional end feed temperature monitoring
- Temperature monitoring
- All tap offs compatible across busbar range
- Compression joint assembly, no torqueing of bolts
- Certified to BSEN 61439-6

KEY BENEFITS

- Maintenance Free busbar system, reduced TCO
- Customisable tap off options, to meet customer requirements
- U-shaped copper busbars: continuous and reliable connection
- Options: integration of metering accessories and value-added accessories (server cabinet mounting brackets, infrared (IR) windows)
- Scalable design for spreading CAPEX
- Increased redundancy and flexibility. Continuous access busway gives the operator, the ability to add or remove cabinets in a live environment
- Easily identify power streams, within the data hall, by means of colour indication on the busbars



Visit our website

[legrand.com/datacenter](https://www.legrand.com/datacenter)



CONTAINMENT AND COOLING

Efficient, energy-efficient cooling solutions that maintain optimal temperatures while reducing costs

MINKELS | MODULAN | USYSTEMS

Legrand's containment and cooling solutions separate hot and cold airflows, enhancing energy efficiency and temperature regulation. This range includes aisle containment supported by cabinets, free-standing solutions ready to receive cabinets rolling in, vertical exhaust ducts that direct hot airflows to false ceilings and passive rear door coolers with zero operational costs.

FEATURES

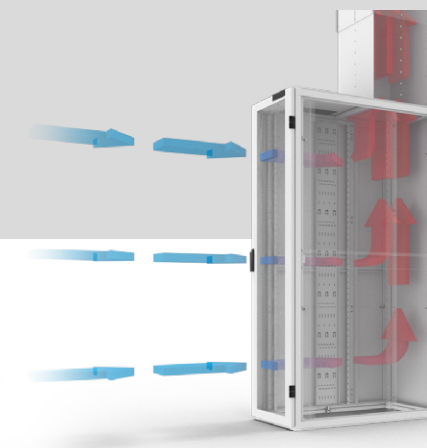
- Customized design
- Optimal airflow management for better energy performance
- FM approved drop-away system for water-based fire extinguishing systems
- Optimized integration of cable management and busbars
- High transparency panels and LED lighting for best aisle visibility
- All containment options available for hot and cold containment layouts
- Passive rear doors compatible with most common cabinet dimensions in the industry

KEY BENEFITS

- A fully configurable solution adaptable to your needs, including IT equipment or constraints linked to the white space (poles, cable pathways, etc.)
- Free-standing easily fits different cabinet heights and provides better OPEX in multiphase projects
- Great cost effective solution for deployments where there are no high heat densities expected per cabinet



CL21 SmartPassive Rear Door Cooler

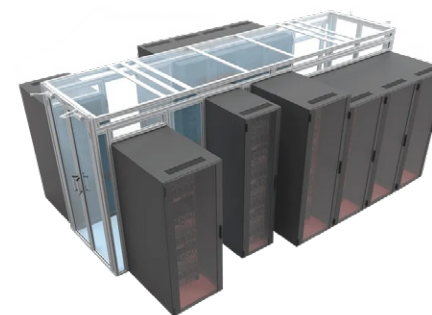


Vertical Exhaust duct



Visit our website

[legrand.com/datacenter](https://www.legrand.com/datacenter)



Custom containment within any complex environment



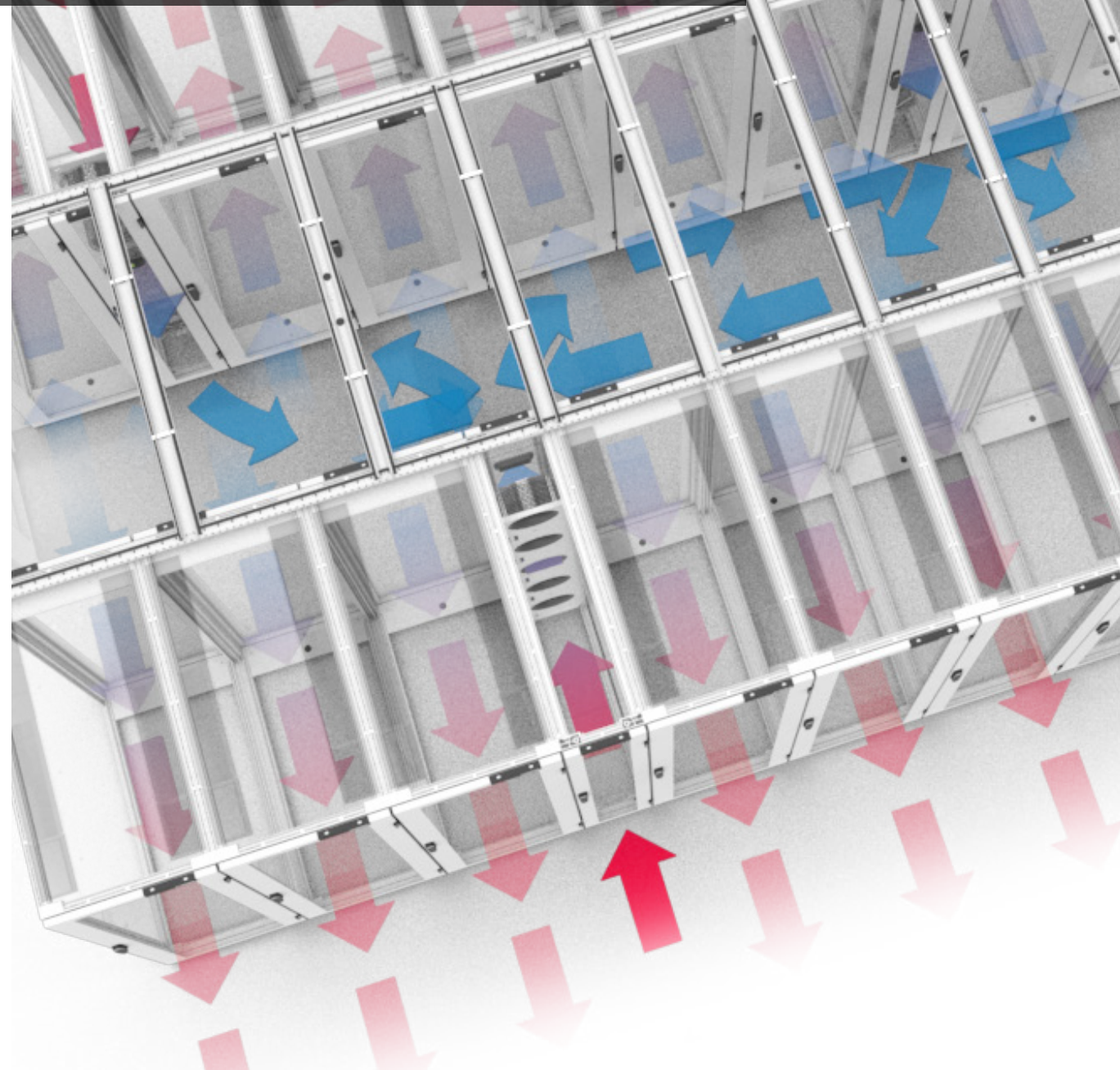
Standard containment



Scalable, self-supporting containment that adapts to growth with your data center

ROW-BASED ACTIVE COOLING

Targeted cooling that maximizes efficiency and reliability, even in high-density environments



DX IN-ROW COOLERS

Legrand's DX in-row cooling systems, including ColdLogik and Nexpan InRow Coolers, provide precise temperature control and optimized airflow for modern, high-density data centers. By circulating chilled water through units placed directly within server rows, our solutions ensure efficient heat removal while significantly lowering operational expenses (OPEX). Designed for diverse cooling needs, from small-scale installations to large-scale operations, they reduce energy consumption, enhance energy efficiency, and adapt to evolving data center demands – aligning with long-term sustainability goals.

Legrand's DX in-row coolers utilize direct expansion technology to provide targeted cooling directly at the source. These units are strategically placed within server rows to deliver consistent and efficient cooling performance. They are perfect for data centers requiring flexible and cost-effective cooling options that adapt to varying thermal loads.

FEATURES

- Highly efficient row-based cooling portfolio
- Row-based coolers integrated in the Nexpan platform, compatible with most cabinet accessories
- Precise temperature control
- Consistent performance
- Energy-efficient design
- Modular design handling heat loads from 10kW to over 60kW
- Designed for seamless integration within existing infrastructure
- Controlled aisle environment for optimized airflow management
- Environmentally friendly engineering
- Suitable for various data center sizes
- Comprehensive pre-installation support



Row-based Chilled Water Coolers (CW)



Row-based Direct Expansion Coolers (DX)

KEY BENEFITS

- A full encompassed solution with precision row-based cooling modules up to 60kW
- Top and bottom piping connections
- Advanced control and monitoring
- Hot swappable fans
- Reduces overall energy usage for significant cost savings
- Maintains consistent temperatures for optimal performance and extended equipment lifespan
- Easily scalable to accommodate growing data center demands without extensive redesigns
- Simplifies installation, reduces setup time, and allows for quick deployment
- Prevents hot and cold air mixing, enhancing cooling efficiency and equipment reliability
- Supports green data center initiatives by minimizing environmental impact and conserving resources
- Facilitates smooth implementation and setup, reducing potential downtime and deployment issues



Visit our website

[legrand.com/datacenter](https://www.legrand.com/datacenter)

REAR DOOR COOLING

Adaptable, energy-efficient cooling with unmatched performance in demanding data center environments

USYSTEMS

ColdLogik Rear Door Heat Exchangers (RDHx) deliver high-performance, scalable cooling, reducing energy consumption and operational costs. They integrate seamlessly into your data center, optimizing space utilization and efficiency.

FEATURES

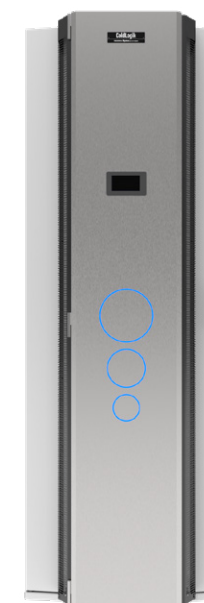
- Designed for significant energy reduction in data centers
- Compatible with both legacy and new build data centers
- Utilizes elevated water temperatures for optimized Water Usage Effectiveness (WUE)
- Incorporates adiabatic cooling technology
- Engineered with a modular design
- Designed for minimal maintenance and high reliability
- Built with redundancy and resiliency
- Scalable based on cooling requirements
- Manufactured with eco-friendly materials and processes
- Comprehensive support and customization options provided by USystems

KEY BENEFITS

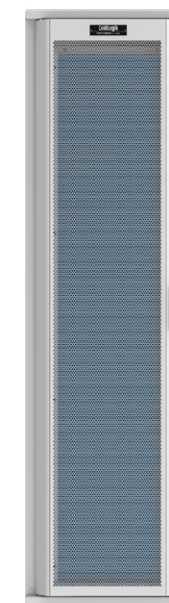
- Achieve higher Power Usage Effectiveness (PUE) for substantial energy savings and lower operational costs
- Cost-effective solution for improving thermal management without extensive modifications
- Conserves water resources and reduces utility expenses for sustainable data center operations
- Maintains optimal operating temperatures in demanding environments, ensuring equipment reliability and longevity
- Simplifies installation, maintenance, and allows for easy scalability and customization
- Reduces downtime and operational disruptions for continuous data center operations
- Provides robust and reliable cooling solutions for uninterrupted performance
- Offers flexibility to adapt to varying loads and future expansion without significant investment
- Supports corporate sustainability goals by reducing environmental impact
- Ensures each deployment meets specific customer requirements with expert guidance and after-sales support



CL20 ProActive Rear Door Heat Exchanger



CL23 Rear Door Coolers



CL21 Smart Passive



Visit our website

[legrand.com/datacenter](https://www.legrand.com/datacenter)

SERVER/NETWORK RACKS AND CABINETS

Modular, energy-efficient racks designed to meet the data center demands of today and tomorrow

MINKELS | MODULAN

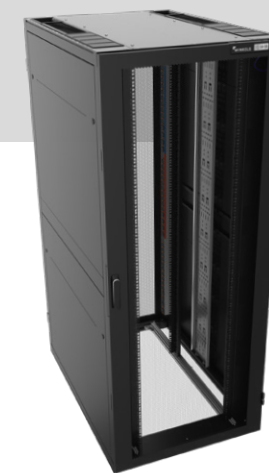
The Nexpan platform and modular's open rack are designed for flexibility and long-term durability, capable of facilitating the installation of (blade) servers, switches, patch panels, routers and storage equipment. Racks and cabinets provide an organized space for IT equipment and cabling, ranging from PDUs, busbars, and cable pathways solutions. These long-term solutions ensure that your infrastructure remains reliable as your data center evolves and IT equipment is replaced.

FEATURES

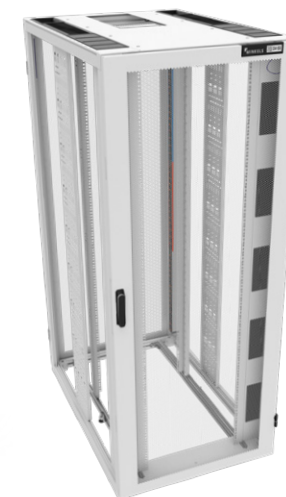
- Server and network racks & cabinets (19", 21", 23", ETSI) and integration cabinets, all in black and white
- Solid, glazed or perforated door
- Light weight and durable chassis
- The cable pathways system has the same flexibility as the chassis
- Wide range of accessories to cover many data center needs

KEY BENEFITS

- Optimal airflow management for better energy performance
- Fully modular design for total adaptability to your IT equipment
- Vast portfolio of cable pathways accessories
- Many accessories inside the rack
- Modular roof design
- Adjustable vertical mounting profiles
- 19 inch solutions available in 560mm wide SE racks to allow more cabinets in same aisle footprint



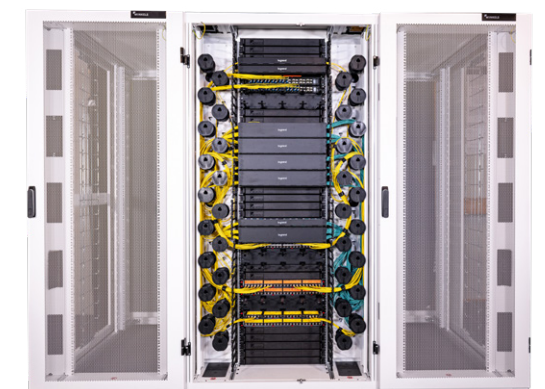
Black Nexpan cabinet with airflow management package



White Nexpan cabinet with airflow management package



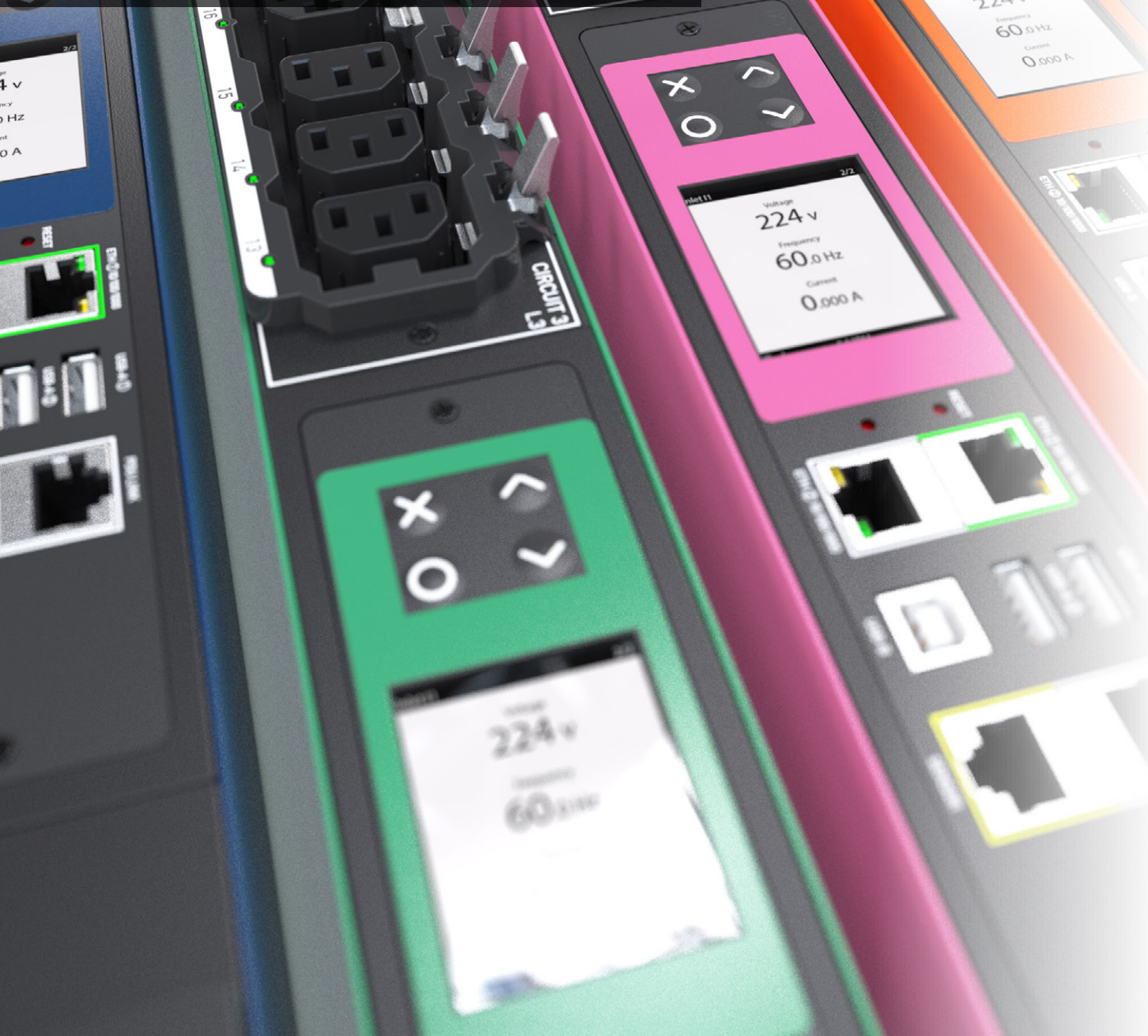
Modulan SE rack



MoR rack cabinet

INTELLIGENT PDUS AND SENSORS

Smart, reliable power management solutions that maximize uptime and minimize risk



FEATURES

Legrand's intelligent PDUs and sensors offer advanced monitoring and management capabilities. Sensors are deployed as plug-and-play options for intelligent rack PDUs, environment data is instantly sent to a DCIM software solution, and an intelligent web-based interface allows data center managers insight into real-time environment data and report trends over time, ensuring uptime and business continuity.

- Single or three phase, up to 67kVA, measurement with +/- 0.5% prediction
- Measurement and switching at the strip, circuit, socket
- Colour coding for easy identification of power supplies
- Integrated management of humidity, temperature, leakage and door opening sensors, as well as electronic locks
- Built-in failover power, residual current monitoring, USB mass configuration, alternating phases per branch or outlets and more
- Supports networked SNMP, MODBUS, open REST based API's and Redfish API

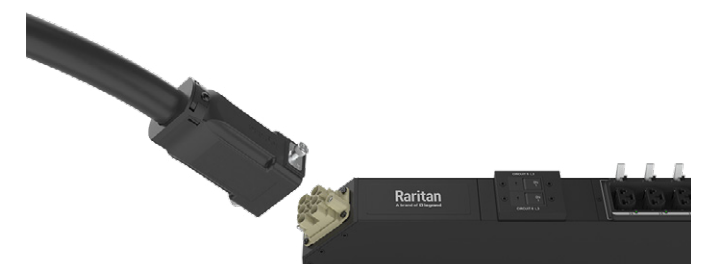
KEY BENEFITS

- Rock-solid reliability: 10 years continuous operation, 350,000 products deployed at leading Fortune 500 companies
- Power failure prevention: robustness, colour coding, redundant network connection.
- Optimized deployment: wired or wireless network connection, extended interoperability with various DCIM or BMS platforms
- Uncompromising safety thanks to Xerus technology
- Universal PDUs available for global deployment, ease your global operations by using the same PDU anywhere, use the right Legrand Smart Input Cord to adapt the product to your region and power needs



Visit our website

[legrand.com/datacenter](https://www.legrand.com/datacenter)



KVM AND SERIAL CONSOLE

Remote access solutions that enhance quality, reliability and security

RARITAN

Raritan's provides a variety of KVM-over-IP Switches that utilize Ethernet and TCP/IP networks to provide secure, reliable remote access, control and management over your infrastructure anytime, anywhere.

FEATURES

- High performance video engine with 1920x1080/1200 video resolution, 30 FPS and 50 ms latency
- VGA, DVI, HDMI & DisplayPort video
- Up to 64 ports models for 8 remote IP sessions
- New best performing solution for 4K video resolution, 60 FPS and 3 monitors
- KVM view mobile app for iPhone/iPad
- Java-Free access
- CommandCenter centralized management to access thousands of devices under a single IP and remote management interface

KEY BENEFITS

- Remotely support computer and networking devices
- Ensure business continuity by quickly fixing problems and restoring service
- Eliminate or reduce travel needs
- Ensure personal safety
- Increased productivity by accessing hundreds, even thousands of computers from your desk
- Secure, encrypted and logged access to computer servers to ensure security



Visit our website

legrand.com/datacenter



STRUCTURED CABLING

Future-proof, high-performance structured cabling systems designed for high performance digital infrastructure

LEGRAND

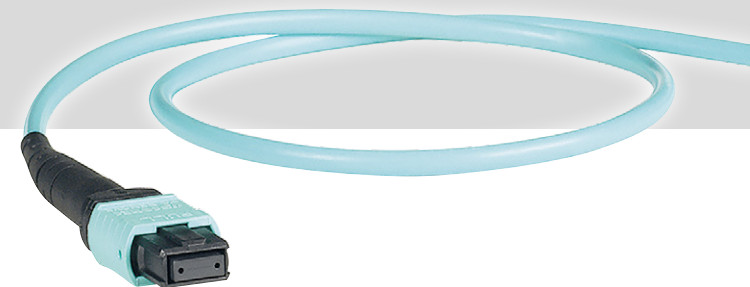
FEATURES

Legrand's structured cabling systems are engineered for high-speed, reliable data transmission to keep pace with growing networks, increasing data volumes and the need for high-density equipment.

- High quality modular solutions, supporting today's higher speeds and densities. Available in 1U/2U/4U
- Futureproof: 400Gb and beyond without redesign or preventing obsolescence with better optical performances (Infinium acclAIM, LCS3)
- Solutions with slim cassettes or without at all
- Integrated labeling options even with highest density

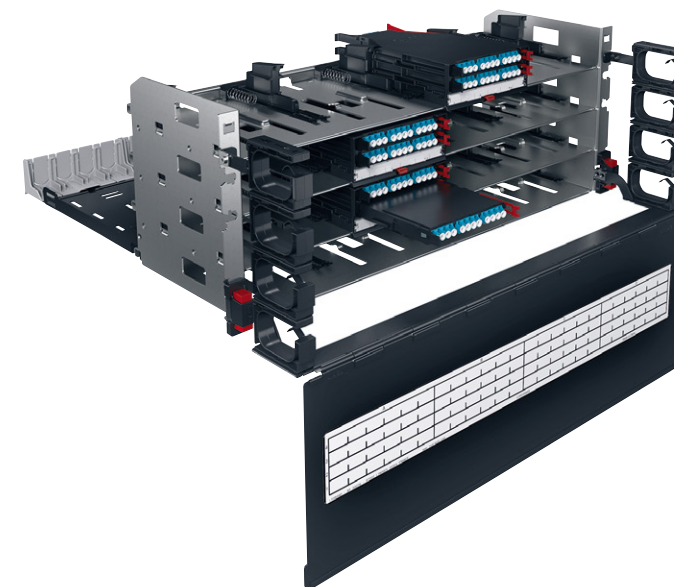
KEY BENEFITS

- Worldwide available, innovative data center solutions yielding industry leading performances
- Futureproof, easy migration to future network designs and technologies
- Easy and time-saving installation
- Easy maintenance with the rear and front optimized cable pathways



Visit our website

[legrand.com/datacenter](https://www.legrand.com/datacenter)



ADVANCED CONNECTIVITY FIBER SOLUTION

Scalable, near-lossless connectivity solutions that future-proof your data center network

LEGRAND

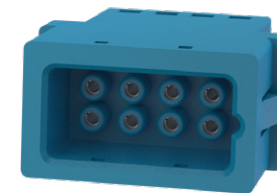
Infinium acclAIM provides superior fiber optic connectivity by replacing pre-terminated cassette-based solutions with direct connections eliminating components, process, and cost. With near lossless link, limitless scalability and no gender consideration, the Direct Mating Breakout and Application Defined Polarity offers vastly improved density and flexibility, and enables sustainable migration, extending the systems lifecycle.

FEATURES

- Ultra-Low Loss, Total Channel loss $\leq 0.4\text{dB}$
- Ultra high density, up to 288 fibre/U
- Simplify connectivity, No gender considerations – no pins, just direct connections
- Direct mating breakout – acclAIM connectors mate directly to an array of 2-fiber mdc duplex patch cords
- Application defined polarity

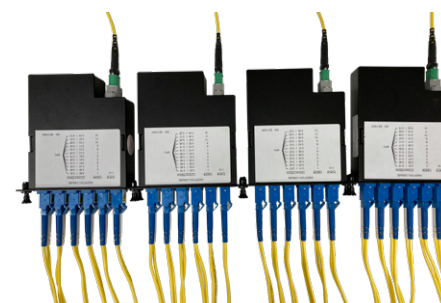
KEY BENEFITS

- Minimize loss – maximize optical headroom
- Eliminate cassettes – no cassettes needed due to direct mating
- Direct connection between multifibre and two-fibre transmission – No adaption needed

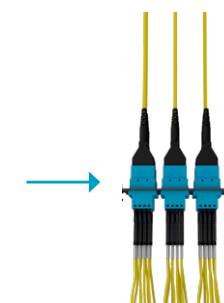


Visit our website

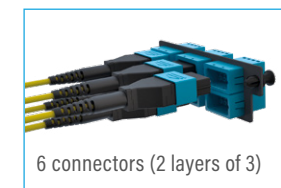
[legrand.com/datacenter](https://www.legrand.com/datacenter)



Current Cassette Based Architecture



acclAIM Based Architecture



6 connectors (2 layers of 3)

DCIM SOFTWARE INTEGRATION

Fully utilize existing resources while staying alert to issues before they cause downtime

Legrand's DCIM software integration enables intelligent, real-time monitoring of your infrastructure, maximizing power efficiency and helping you stay ahead of the curve in energy management and sustainability.

FEATURES

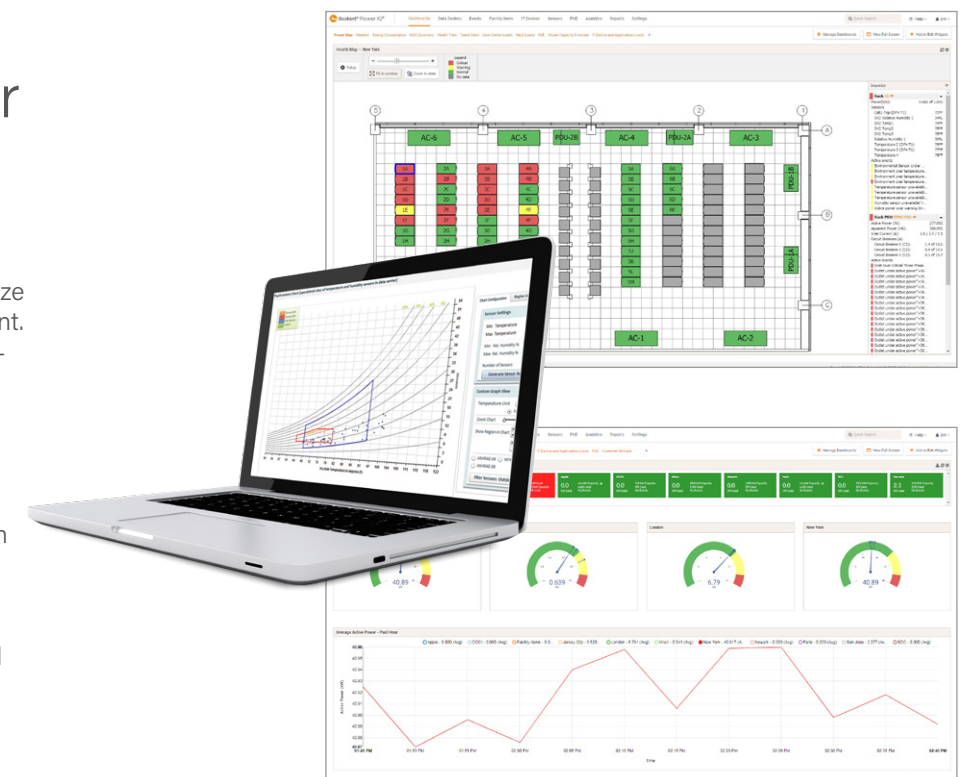
- Diverse Software Provider Network: Access to a wide range of specialized software providers
- DCIM Focus: Emphasis on data center infrastructure management solutions
- Regular Business Reviews: Ensuring ongoing alignment and improvement.
- Integration of Live Data: For real time monitoring and decision making.
- Shared APIs: Facilitating seamless connectivity between software and hardware solutions

KEY BENEFITS

- Software solutions specific to customer needs
- Enhanced operational efficiency, reducing energy consumption and improving infrastructure management
- Advanced Technology integration, overcoming traditional tool limitations
- Continuous innovation
- Expertise and Trust, benefit from collaborative industry expertise

Independent Software Vendor (ISV) Program

Legrand's ISV Program is a cutting edge initiative designed to revolutionize data center infrastructure management. As a strategic collaborating with best-in-class software providers, we can tailor solutions to meet your diverse needs across various segments. The world of data center management is evolving rapidly, driven by the need for more efficient energy consumption and the strategic necessity of adapting to market demands. Our ISV Program goes further, focusing on reducing energy consumption and demonstrating our commitment to environmental impact.

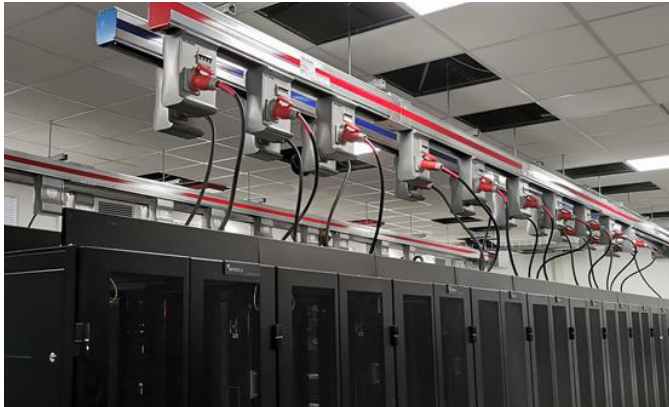


CUSTOMER SUCCESS STORIES

TUSCANY CLOUD SYSTEM ITALY

Ensuring uninterrupted services with solutions ranging from high-availability transformers to smart PDUs

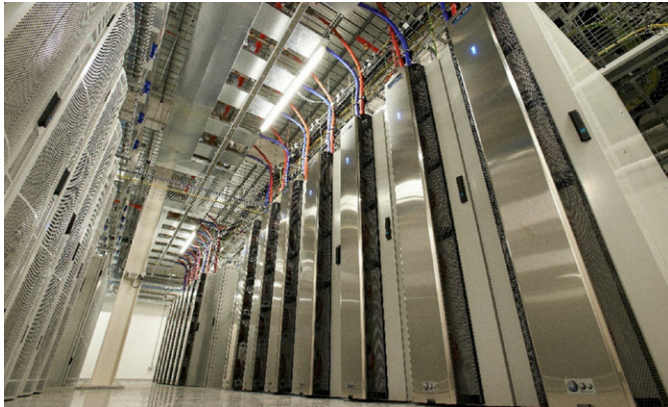
"The Tuscany region data center is an important center of attention to the person because it allows to manage in a safe and centralized way the history of our citizens, we can say that life flows inside our data center."



CAMBRIDGE UNIVERSITY UK

Building a world-class data center to support research, reduce emissions, and set a new benchmark for energy efficiency in higher education

"The West Cambridge Data Centre project will mark out the University as a clear early-adopter of the latest energy-efficient technology, showing what can be achieved and leading the way for other HE establishments to follow."



TECHNOSECTOR AND MIND PARK SERBIA

Establishing resilient IT infrastructure and an on-site data center with racks, UPS, and cooling solutions

"Legrand is not only a sales company, but they are a company involved in developing new ideas and new solutions. And they cover the complete data infrastructure field, from the socket right up to the UPS system – everything you need."



E-QUEST THE NETHERLANDS

Navigating challenges of growth, regional expansion, and efficient infrastructure development with tailored solutions

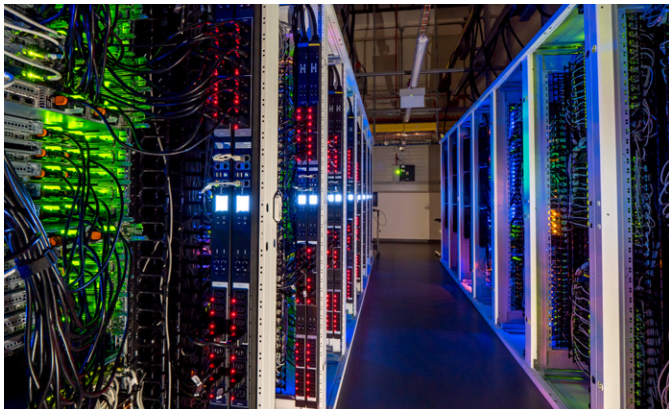
"For the longer term, we're not ruling out the possibility that we might build another data center. At that point, Legrand will most definitely be on our short list of preferred vendors."



SEZNAM.CZ THE CZECH REPUBLIC

Delivering a sustainable, and future-ready data center in just 12 months, ready to support high-density computing and AI workloads

"Partnering with Legrand to complete this project in such a short timeframe was a testament to both teams' dedication and innovative spirit. The new data center not only meets our current needs but also positions us for future growth!"



TF1 FRANCE

Enabling modernization by equipping and upgrading computer rooms with tailor-made racks

"We chose white Minkels racks so that they would be bright, to optimize the lighting, and for their warmth. Legrand also helped integrate the In Row racks and the sealing adjustments for the cold aisle air conditioning."



CUSTOMER SUCCESS STORIES

BULK NORWAY

Delivering scalable, efficient cooling for flexible, colocation clients with ColdLogik CL20 RDHx

"Implementing RDHx in our existing facility allowed us to meet the specific requirements of a high-performance computing customer in a very short time frame. We will work with key partners like USystems to ensure we can support our customers and partners now and moving forward."



TELEHOUSE FRANCE

Providing secure, high-performance racks, PDUs, and advanced security systems, supported by expert guidance and sustainable practices

"In the end, we came up with the solutions we needed and there was no delay. This project was such a success that our relationship is now even stronger."



MOVE-IT TECHNOLOGY GERMANY

Becoming the single source supplier of key infrastructure and crucial components to meet the challenges of relocation

"With Legrand as a partner, Move-IT Technology has numerous innovative, space and energy-saving components available from a single source for the data center conversion."



DTIX FRANCE

Providing customized, modular cabinets that meet the high availability and security needs of the IT equipment housed within

"In addition to the solid reputation of the Legrand Group and the high quality of its modular products, I have really valued the responsiveness, ability to listen and customer-oriented approach it has brought to every stage of the project."



IOMART UK

Sourcing the right solutions to solve the challenges of a continuous data center improvement program

"The lead times, support and customer service of Server Technology, through Kinetic IT, are first-class. As for the PDUs themselves – they just work!"



SERVICE EXPRESS UK

Reducing environmental impact by resolving energy efficiency challenges with Keor XPE's scalable UPS System

"The direct swap out and upgrade has contributed to reducing the data centers PUE ratio to 1.1. Which is believed to be one of the lowest in the UK. This contributes to our overall goals of running one of the most energy efficient data centers in the UK."



NOTES

[illegible]

NOTES

[illegible]



#LegrandImprovingLives

Managing a data center is **complex**. It requires careful consideration of a range of factors to ensure **performance, reliability, scalability, and sustainability**.

To help you **navigate these challenges**, we offer tailored **grey and white space** solutions at scale to meet individual needs through our **specialist brands** that include **Minkels, Raritan, Server Technology, Starline, and USystems**.

Our approach combines **technical expertise** with a deep commitment to **sustainability**, helping you **optimize data center performance** while reducing environmental impact. We build enduring partnerships with our clients grounded in **trust, collaboration, and shared aspirations**. Whether **improving reliability** or **increasing efficiency**, we work to ensure that every detail is correct.

With our support, you can approach the **future with confidence**, knowing that your data center is ready for what's next.

Legrand: We go further

Headquarters

128, avenue de Lattre de Tassigny
87045 Limoges Cedex
France
Tel.: + 33 (0) 5 55 06 87 87

**DATA CENTER
SOLUTIONS**



[linkedin/legrand-data-center](https://www.linkedin.com/company/legrand-data-center)



[legrand.com/datacenter](https://www.legrand.com/datacenter)

